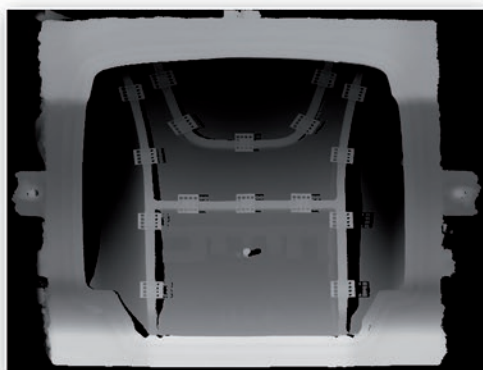
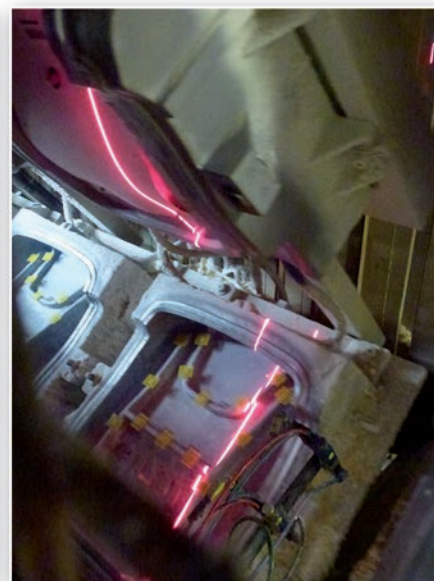


# GIPS *vision*

Votre partenaire en contrôle non destructif

## DAKOTA

3D machine vision-based  
component inspection



On-the-fly mold inspection before injection

Simultaneous inspection of bowl and lid

Up to 999 check points per mold

100% systematic inspection

999 different mold references

24/7 operational at production rate

(~1000 parts/h) and line speed (14m/min)

## 20 years of experience serving industry



[www.gipsvision.fr](http://www.gipsvision.fr)



## Two modules 3D Camera+laser

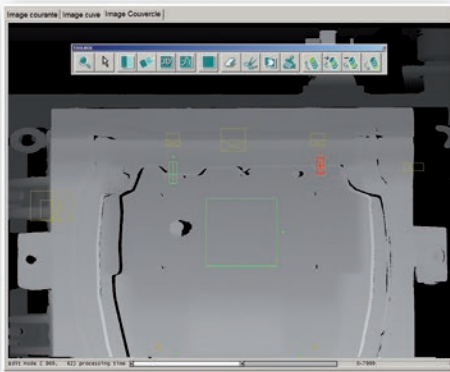
High performance cameras, 2000pixels, 1000 profiles/s  
+ Class III laser, on non-deformable base plate



High speed  
3D-profile camera



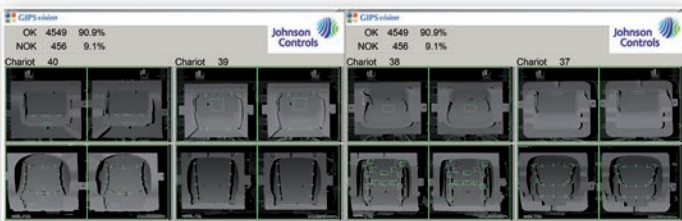
## Dedicated software



Multi-thread  
PC based application

Fully trainable  
check points through  
user-friendly graphic interface

## Immediate and/ or deferred display



The Dakota system communicates with line supervision through Profibus, recording statistics per shift in a Logbook

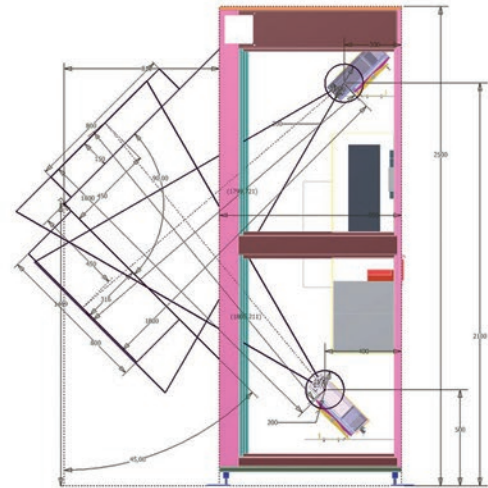


## 3D machine vision-based component inspection



Cabinet enclosure  

Support for bowl & lid camera modules  
Laser protection, PC and user panel



## Production statistics

Time	Char.	Pos <sup>1</sup>	Ref	Moule	Res	Default1	Default2	Boj
07:37:06	8	75	793670	9	OK			
07:37:06	8	1	396575	1	KO	1H2-4		
07:37:15	9	75	333286	11	OK			
07:37:15	9	1	333286	22	OK			
07:37:25	10	75	076205	2	OK			
07:37:25	10	1	076211	2	OK			
07:37:34	11	1	834534	2	KO	Clip H3-8		
07:37:44	12	75	831089	8	OK			
07:37:44	12	1	831089	3	KO	1C-H11-2		
07:38:10	13	1	333286	16	OK			
07:38:19	13	75	268802	3	OK			

## Performance

Field width: 800mm  
Depth-of-field: 250mm  
X&Y resolution: 500µm  
Product length: 1700mm  
Installed on line edge  
on racetrack or turn table  
Line speed : up to 14m/min  
Rate: 1 to 6 molds per carrier  
Database up to 999 references

