



Graduel

Vision inspection

Pointers and graduations

Fully trainable software tool



- Test setup through a user friend graphical interface under windows™
- Immediate training, visual result display.
- Production statistics recording and operating
- Quick and simple integration :
runtime (.exe) training soft & wide compatible library, visual C++, Visual Basic or Delphi

Applications :

Meters and analog displays

(Rev counter, Speedometer, fuel gauge, manometer, clock...)

Functional checking (Pointer angle, absolute position or position relative to graduation...)

Vision inspection (pointer color and intensity, Scale integrity and homogeneity...)

Dynamic measurement (Pointer stability, Movement speed and regularity, bouncing, shivering...)

Automotive or Aeronautics equipment

(Dashboards, Instruments...)

Electronic industry

(instruments, displays, Meters...)



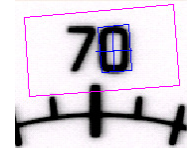


Pointer and Graduation Vision Inspection

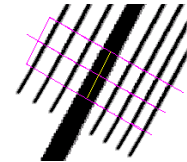
Different kind of blocs



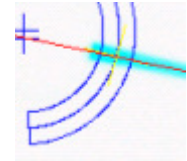
Ruler box :
landmark,
graduation



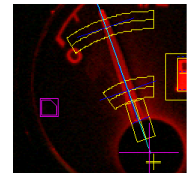
Linear ruler :
pointer,
linear graduation



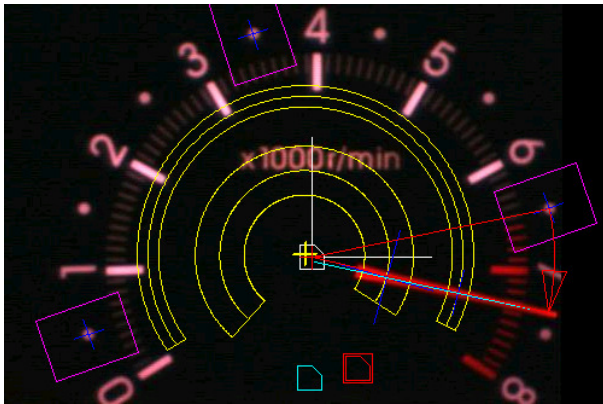
Circular ruler :
pointer,
circular graduation



Formula :
complex
measurement
computing tool

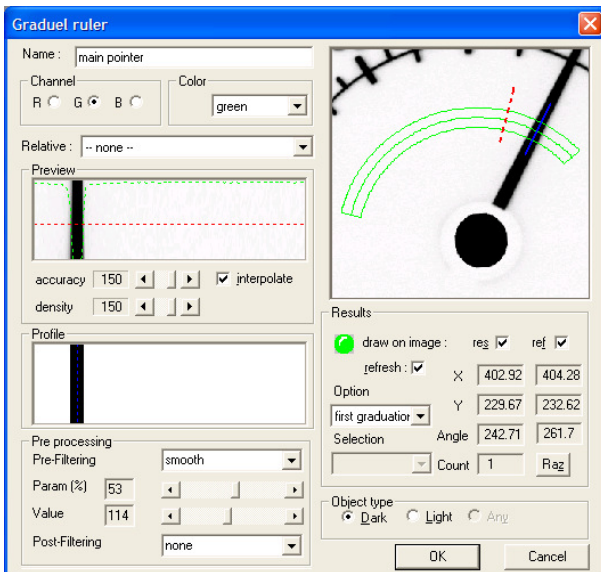


User-friendly graphical interface



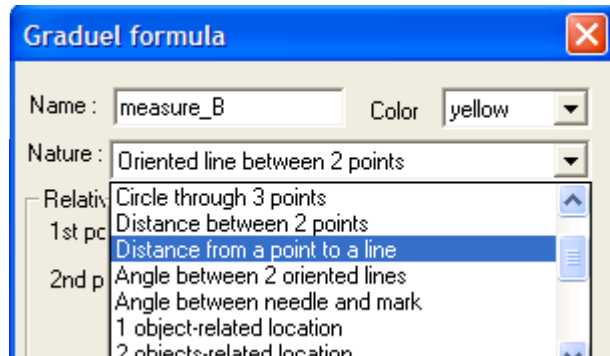
- Set working area and location tolerances
- Choose elements to be tested
- Define measurements and threshold values
- Test « live » your settings

Graphical tools adjustment



Setup property dialog box

Several measurement tool



To each need fits a computing tool

Graduel uses **Common Vision Blox**,
distributed by : www.stemmer-imaging.fr



Graduel
designed, developed and maintained
by **GIPS Vision**
www.gipsvision.fr

Contact : frederic.equoy@gipsvision.fr



Digital imaging and machine vision